



OCTOBER  
11-12, 2024  
MILAN, ITALY

Delta *Cure*  
3<sup>rd</sup> International Meeting

# Bulevirtide in EU: SAVE-D Study Update

Elisabetta Degasperi

Division of Gastroenterology and Hepatology  
Fondazione IRCCS Ca' Granda Ospedale Maggiore Policlinico,  
Milan, Italy

# Elisabetta Degasperi - COIs

- Research Grant: Gilead Sciences
- Travel Support: Advanz Pharma, Gilead Sciences
- Advisory Board: Roche
- Speaker Bureau: Abbvie, Gilead Sciences



# SAVE-D Study: Materials and Methods



---

<b>Study Design</b>	Retrospective, multicenter, investigator-driven, real-world
<b>Enrolling Centers</b>	46 European Centers (Italy, France, Austria, Germany, Greece, Portugal, Sweden, Switzerland, United Kingdom)
<b>Enrollment Period</b>	September 2019 – February 2023
<b>Inclusion Criteria</b>	Consecutive HDV patients with cirrhosis starting BLV
<b>Treatment</b>	BLV 2 mg/day monotherapy self-administered (s.c. injections)
<b>Monitoring</b>	Baseline and every 24 weeks or according to investigator discretion
<b>Primary Endpoint</b>	Virological response (HDV RNA $\geq 2$ Log IU/mL decline or undetectable) HDV RNA levels tested locally <sup>°</sup>
<b>Secondary Endpoints</b>	HDV RNA undetectable Biochemical response (ALT normalization <sup>§</sup> ) Combined response (virological and biochemical response) Adverse events (AEs) Liver-related events and mortality

---

<sup>§</sup>ALT<40 U/l (EASL criteria); <sup>°</sup>Robogene 2.0 (LOD 6 IU/mL), Eurobioplex (LOD 100 IU/mL), Bosphore V1 (LOD 45 cp/mL), in-house PCR (LOD 100 cp/mL) most used assays  
HDV: hepatitis Delta Virus; BLV: Bulevirtide; ALT: alanine aminotransferase; AE: adverse event

# Patients' Features at Baseline (BLV start)



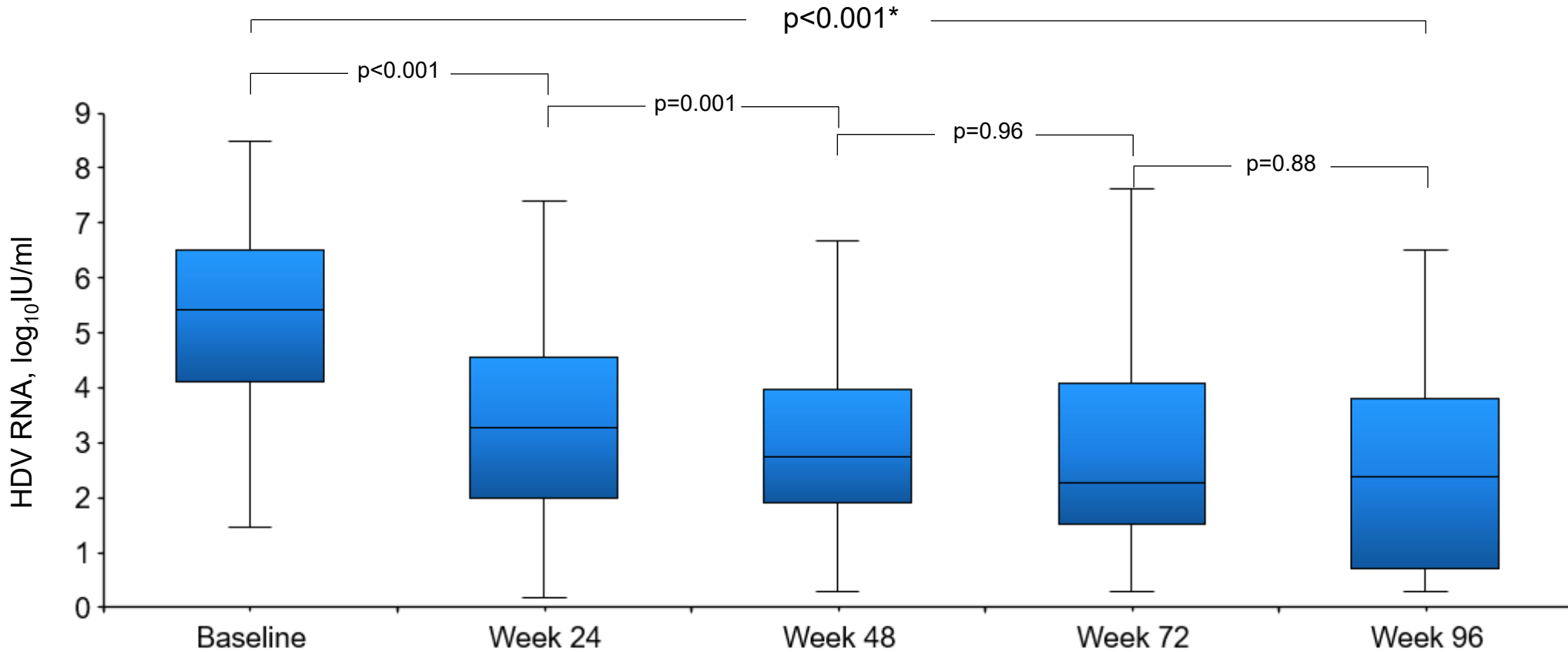
Baseline Variables	Overall (n=244)
Age, years	49 (40-58)
Males	148 (61%)
Caucasians	201 (82%)
HDV genotype 1*	77 (94%)
HIV coinfection <sup>°</sup>	24 (10%)
BMI, Kg/m <sup>2</sup>	25 (23-28)
CPT score A <sup>§</sup>	233 (95%)
Spleen diameter, cm	15 (12-17)
Esophageal varices <sup>@</sup>	91 (54%)
Previous decompensation <sup>+</sup>	37 (15%)
History of HCC <sup>#</sup>	18 (7%)
Previous IFN treatment	142 (58%)
NUC treatment	224 (92%)

Baseline Variables	Overall (n=244)
LSM, kPa	18.3 (13.0-26.0)
Bilirubin, mg/dL	0.9 (0.6-1.4)
AST, U/L	75 (54-113)
ALT, U/L	80 (55-130)
GGT, U/L	68 (39-114)
Albumin, g/dL	3.9 (3.5-4.3)
Creatinine, mg/dL	0.8 (0.7-0.9)
PLT, 10 <sup>3</sup> /mm <sup>3</sup>	94 (67-145)
Bile acids, μmol/L	15 (9-32)
qHBsAg, Log IU/mL	3.8 (3.4-4.1)
HBeAg negative	227 (93%)
HBV DNA detectable <sup>°°</sup>	55 (21%)
HDV RNA, Log IU/mL	5.4 (4.1-6.5)

\*available in 82 patients; °all patients HIV RNA undetectable; §CPT A6 in 59 (24%), CPT B7 in 11 (5%); @available in 169 (69%) patients; 62 (37%) on prophylaxis; +ascites in 30 (12%), bleeding in 7 (3%); #active HCC in 14 (6%); °°according to local laboratory, median 1.4 (1.0-1.5) logIU/mL

Values are expressed as number (percentage) or median (IQR)

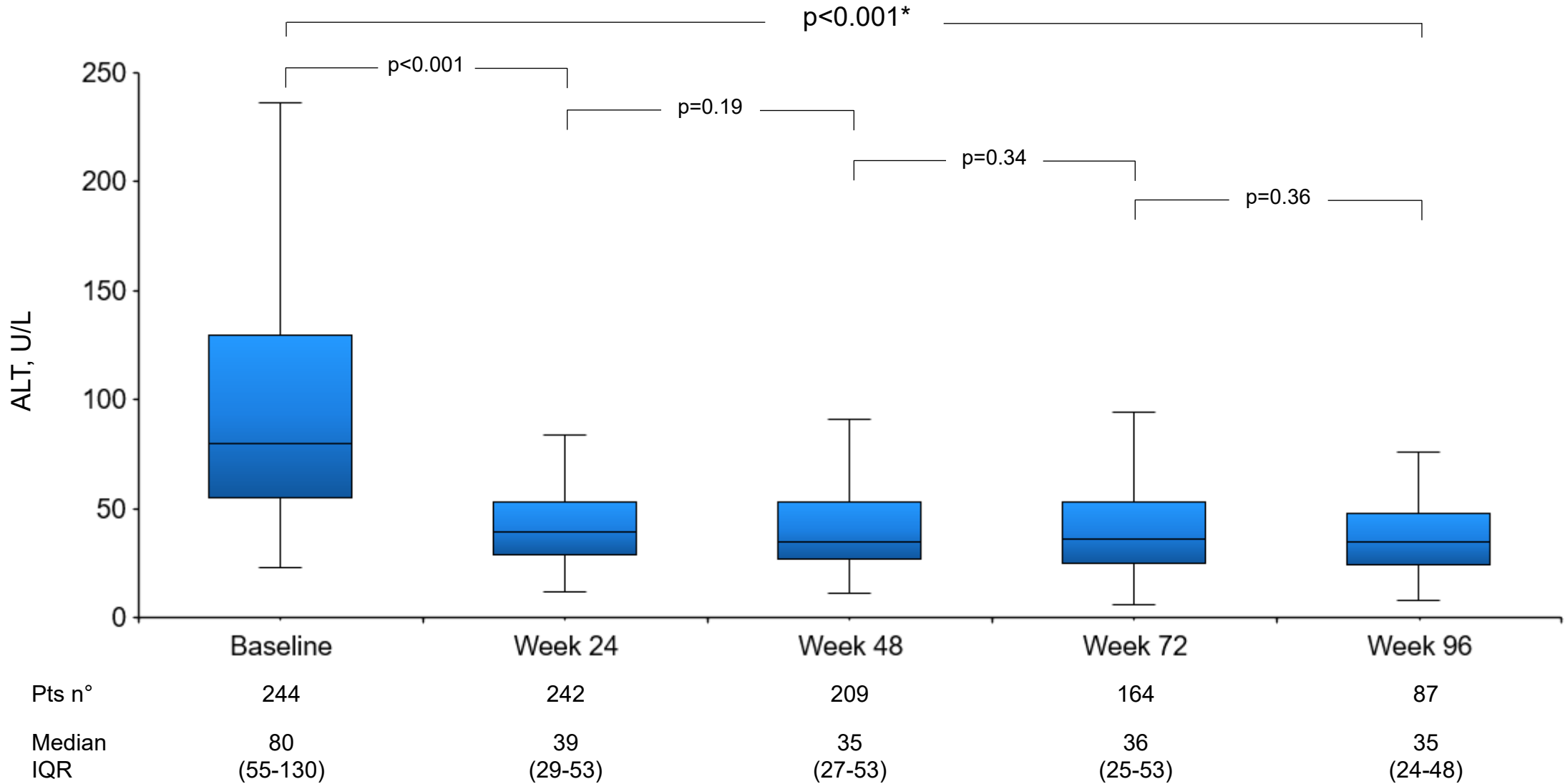
# HDV RNA Levels During BLV Monotherapy



Pts n°	244	242	209	164	87
Median	5.4	3.3	2.7	2.3	2.4
IQR	(4.1-6.5)	(2.0-4.6)	(1.9-4.0)	(1.5-4.1)	(0.7-3.8)
<b>HDV RNA Decline (Log)</b>		<b>1.8 (1.0-2.7)</b>	<b>2.5 (1.3-3.7)</b>	<b>2.5 (1.3-3.9)</b>	<b>2.7 (1.6-4.1)</b>

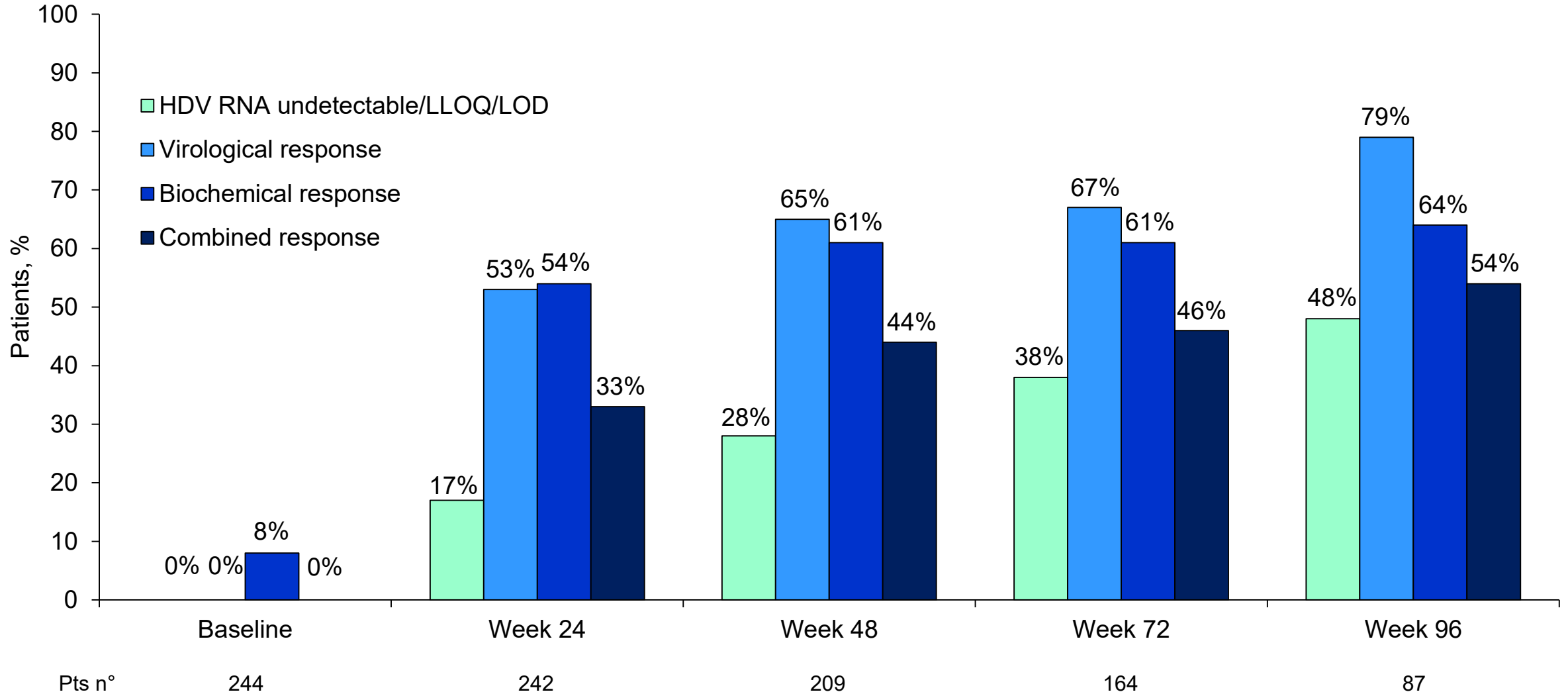
\* All timepoints vs. baseline

# ALT Levels During BLV Monotherapy



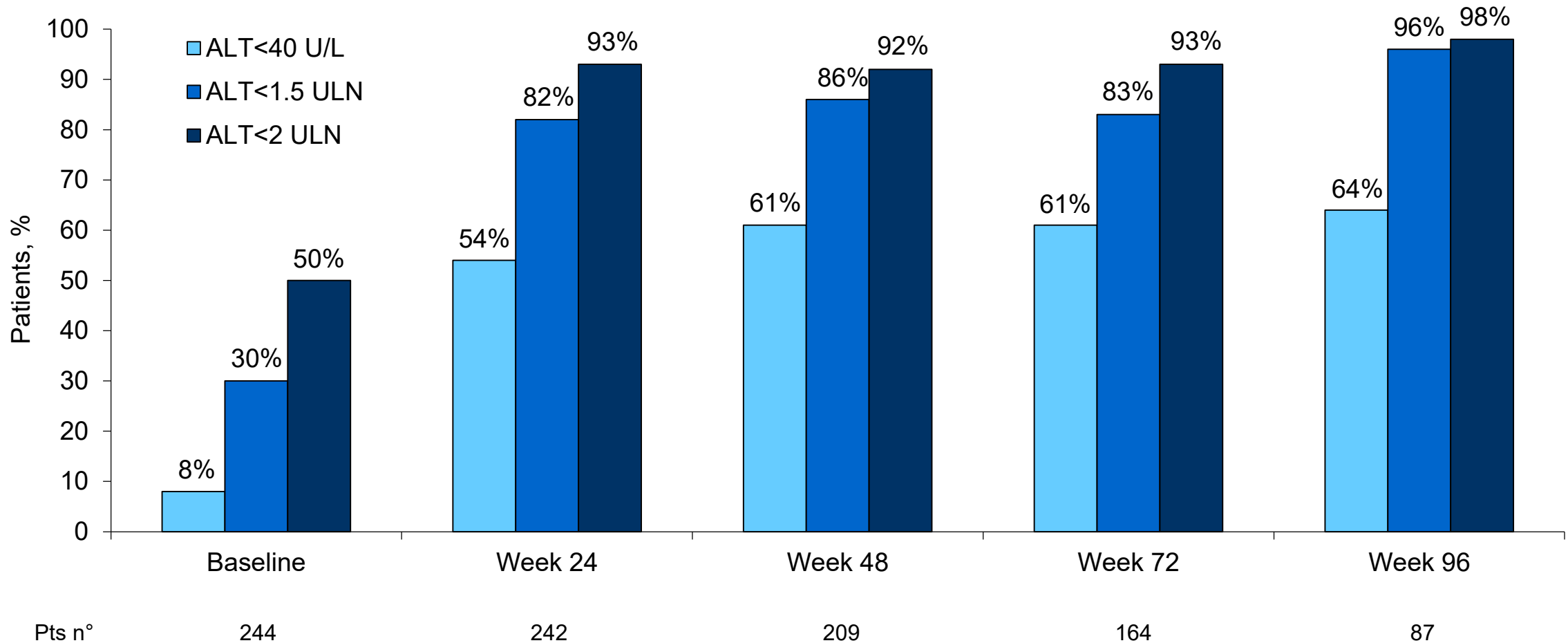
\* All timepoints vs. baseline

# Effectiveness of BLV Treatment Up to 96 Weeks



Virological response: Undetectable HDV RNA or  $\geq 2$  log decline from baseline; Biochemical response: ALT <40 U/L; Combined response: virological and biochemical  
 Undetectable: Target Not Detected (TND), Below the Limit of Quantification (<LLOQ) or Below the Limit of Detection (<LOD)

# Biochemical Response During BLV Monotherapy



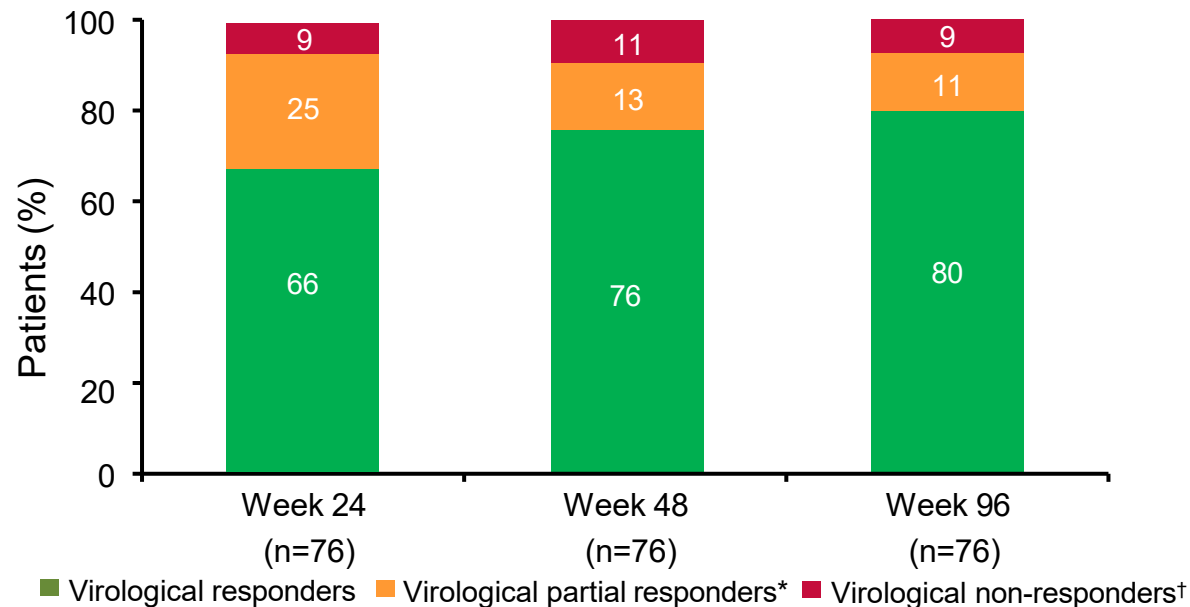
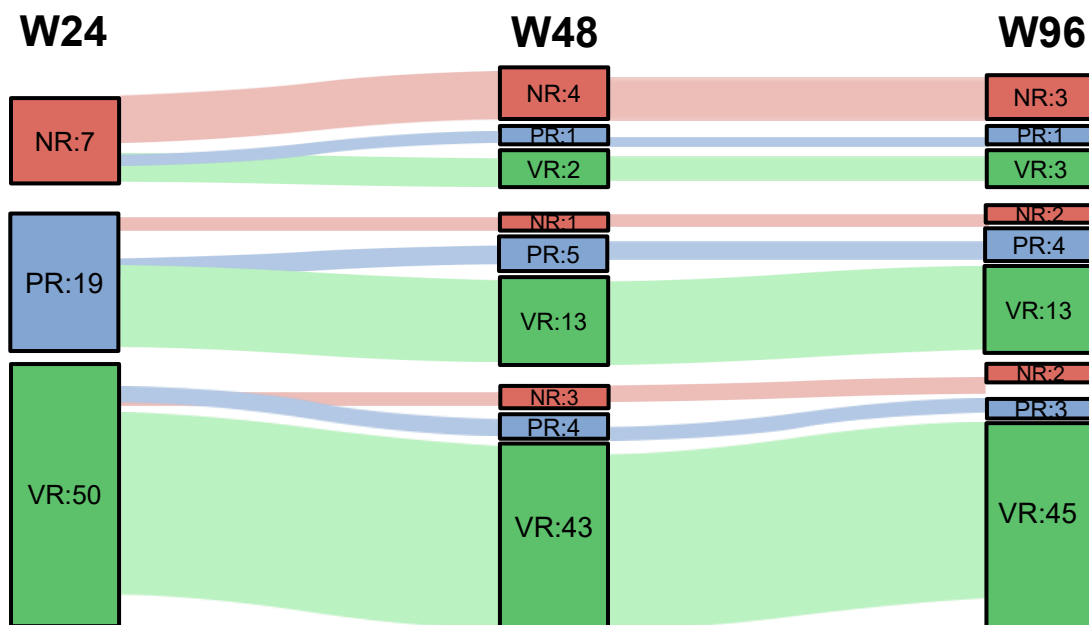
\*EASL Criteria; ALT: Alanine aminotransferase; ULN: Upper limit of normal





# Course of Suboptimal Responders During BLV Treatment

Subanalysis in n=76 patients with paired W24 – W48 – W96 assessments



## OVERALL ANALYSIS (n=244)

- Virological NR: 22% (W24) - 19% (W48) - 10% (W96)
- Biochemical Response in NR: 33% (W24) - 36% (W48) - 25% (W96)
- ≥50% ALT decrease in NR patients: 31% (W24) - 30% (W48) - 50% (W96)
- Virological NR and no ALT decrease compared to baseline: 8% (W96)

68%

13/19 virological partial responders at Week 24 became virological responders at Week 96

43%

3/7 virological non-responders at Week 24 became virological responders at Week 96

57%

4/7 patients who remained virological non-responders achieved ALT declines of >50% from BL at Week 96

\* Virological partial responders: patients achieving HDV RNA decline of ≥1 but <2 log<sub>10</sub> IU/mL from baseline

† Virological non-responders: patients with an HDV RNA decline of <1 log<sub>10</sub> IU/mL from baseline

# Baseline Predictors of Responses at Week 48: Univariate Logistic Regression Analysis



Week 48 (n=209)									
		Virological Response		HDV RNA Undetectable		Biochemical Response		Combined Response	
Baseline variables	Category	OR (95% CI)	p value	OR (95% CI)	p value	OR (95% CI)	p value	OR (95% CI)	p value
Age, years	Continuous	1.00 (0.98-1.03)	0.91	0.99 (0.96-1.01)	0.33	1.05 (1.02-1.08)	0.003	1.02 (0.99-1.05)	0.05
Male sex	yes vs. no	0.99 (1.53-1.89)	0.99	1.11 (0.56-2.21)	0.76	0.66 (0.35-1.22)	0.19	0.60 (0.33-1.11)	0.11
Caucasian	yes vs. no	0.79 (0.35-1.81)	0.59	0.48 (0.21-1.06)	0.07	0.68 (0.31-1.50)	0.34	0.65 (0.30-1.40)	0.27
LSM, kPa	Continuous	1.03 (0.99-1.06)	0.07	1.00 (0.98-1.03)	0.80	0.99 (0.97-1.01)	0.66	1.00 (0.98-1.03)	0.52
Esophageal varices	yes vs. no	1.16 (0.55-2.41)	0.70	1.44 (1.02-5.86)	0.05	0.96 (0.46-1.99)	0.91	0.71 (0.34-1.46)	0.35
ALT, U/L	Continuous	0.99 (0.98-1.01)	0.20	0.99 (0.98-1.01)	0.29	0.99 (0.98-1.00)	0.12	0.99 (0.98-1.01)	0.13
GGT, U/L	Continuous	0.99 (0.99-1.01)	0.64	0.99 (0.99-1.01)	0.32	0.98 (0.97-0.99)	<b>0.01</b>	0.98 (0.97-0.99)	<b>0.04</b>
Albumin, g/dL	Continuous	0.67 (0.39-1.27)	0.24	1.29 (0.69-2.42)	0.42	0.63 (0.36-1.12)	0.12	0.68 (0.38-1.19)	0.17
PLT, x10 <sup>3</sup> /mm <sup>3</sup>	Continuous	1.00 (0.99-1.01)	0.20	1.00 (0.99-1.01)	0.71	0.99 (0.98-1.00)	0.85	1.00 (0.99-1.01)	0.16
Bile acids, μmol/L	Continuous	0.99 (0.98-1.01)	0.46	0.99 (0.98-1.00)	0.39	1.00 (0.99-1.02)	0.19	0.99 (0.99-1.01)	0.78
HBsAg, log <sub>10</sub> IU/mL	Continuous	3.15 (1.57-6.31)	<b>0.001</b>	0.76 (0.41-1.42)	0.41	1.22 (0.69-2.14)	0.48	2.58 (1.28-5.21)	<b>0.01</b>
HDV RNA, log <sub>10</sub> IU/mL	Continuous	1.31 (1.07-1.60)	<b>0.01</b>	0.74 (0.60-0.92)	<b>0.01</b>	0.84 (0.69-1.02)	0.08	1.06 (0.88-1.27)	0.54

Univariate logistic regression analysis; LSM: liver stiffness measurement; ALT: Alanine Aminotransferase; GGT: Gamma glutamyl transferase; PLT: platelets; HDV: Hepatitis Delta Virus

Virological response: HDV RNA undetectable or  $\geq 2$  log<sub>10</sub> IU/mL decline vs. baseline; Biochemical response: ALT normalization; Combined response: HDV RNA undetectable or  $\geq 2$  log<sub>10</sub> IU/mL decline vs. baseline and ALT normalization

# Time Course of Biochemical, Virological Features and Non-Invasive Tests During BLV Monotherapy



Variables	Baseline	Week 24	Week 48	Week 72	Week 96	p value <sup>A</sup>	p value <sup>B</sup>
Bilirubin, mg/dl	0.9 (0.6-1.4)	0.8 (0.5-1.3)	0.9 (0.6-1.3)	0.8 (0.5-1.2)	0.8 (0.6-1.2)	0.42	0.07
AST, U/L	75 (54-113)	42 (33-56)	40 (30-55)	35 (30-55)	36 (29-50)	<0.001	<0.001
ALT, U/L	80 (55-130)	39 (29-53)	35 (27-53)	36 (25-53)	35 (24-48)	<0.001	<0.001
GGT, U/L	68 (39-114)	42 (28-72)	38 (22-62)	38 (21-62)	31 (19-53)	<0.001	<0.001
Albumin, g/dL	3.9 (3.5-4.3)	4.1 (3.6-4.4)	4.1 (3.8-4.5)	4.2 (3.8-4.6)	4.1 (3.8-4.5)	<0.001	0.04
PLT, 10 <sup>3</sup> /mm <sup>3</sup>	94 (67-145)	102 (66-145)	103 (67-151)	92 (60-137)	91 (62-125)	<0.001	0.04
AFP, µg/L	6 (3-12)	5 (3-8)	4 (3-6)	3 (2-4)	3 (2-4)	0.02	<0.001
IgG, mg/dL	2,020 (1,700-2,458)	1,716 (1,456-2,028)	1,697 (1,396-1,899)	1,600 (1,379-1,850)	1,616 (1,479-1,938)	<0.001	<0.001
HBsAg, log <sub>10</sub> IU/mL	3.8 (3.4-4.1)	3.7 (3.4-4.1)	3.6 (3.3-4.1)	3.6 (3.3-4.0)	3.5 (3.4-3.9)	0.001	<0.001
LSM	18.3 (13.0-26.3)	14.6 (10.9-25.0)	14.4 (9.6-23.2)	15.4 (11.6-21.7)	14.0 (11.0-19.8)	<0.001	<0.001
APRI	2.2 (1.4-4.3)	1.3 (0.7-2.3)	1.1 (0.7-2.0)	1.3 (0.8-2.2)	1.2 (0.7-2.9)	<0.001	<0.001
FIB-4	4.6 (2.3-7.4)	3.4 (2.0-5.7)	3.1 (1.9-5.6)	3.5 (2.2-6.2)	3.7 (2.2-5.7)	<0.001	<0.001

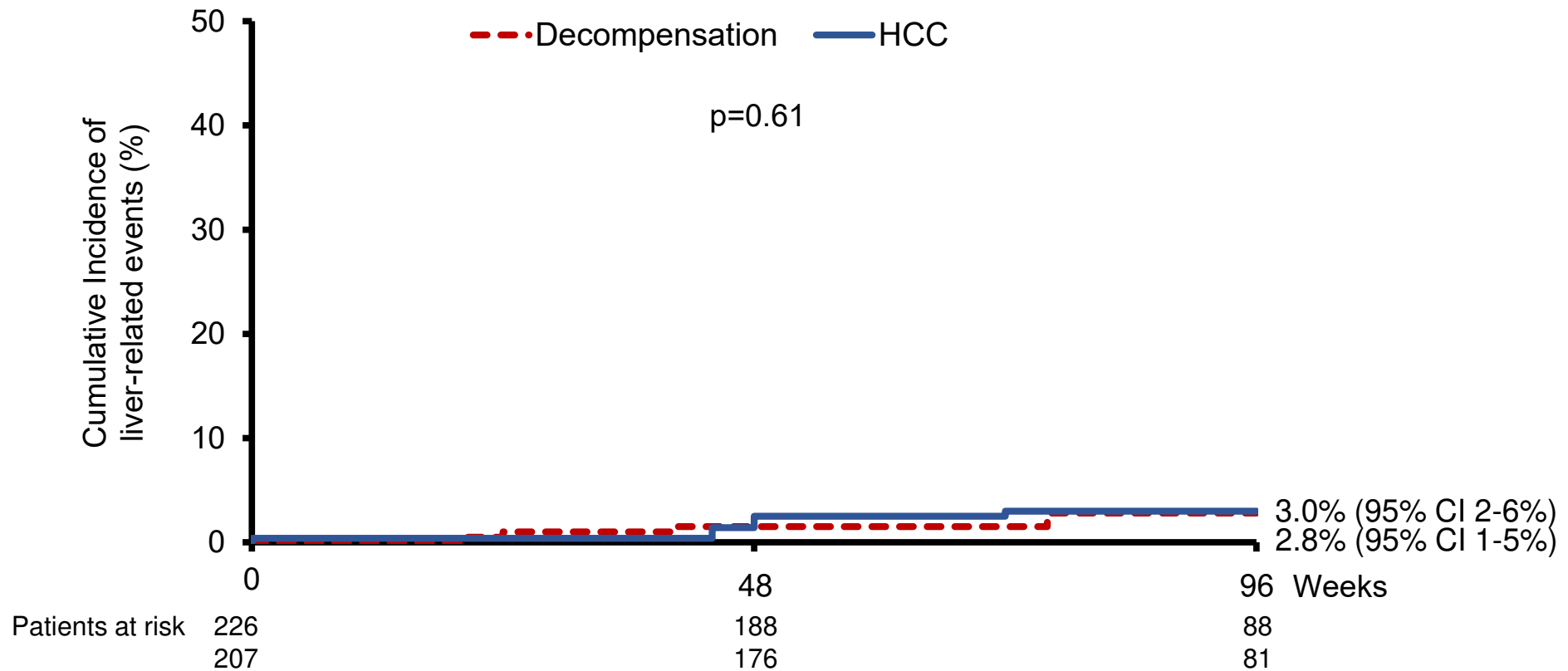
Values are expressed as median (IQR); Repeated measures analysis of variance (ANOVA) in patients with paired W48 (A) or W96 (B) data vs. baseline (Bonferroni corrected)

AST: aspartate aminotransferase; ALT: alanine aminotransferase; GGT: Gamma glutamyl transferase; PLT: platelets; AFP: Alpha-fetoprotein; HBsAg: Hepatitis B surface Antigen; LSM: Liver stiffness measurement; APRI: AST-to-Platelet ratio; FIB-4: Fibrosis-4 index

# De-Novo Liver-Related Events During BLV Monotherapy



- Median follow-up: 92 (72- 96 weeks)
- 11 (5%) Liver-related events
  - 6 (2.5%) HCC
  - 5 (2.0%) Decompensating events (3 ascites; 2 variceal bleedings)



# De-Novo Liver-Related Events: Details



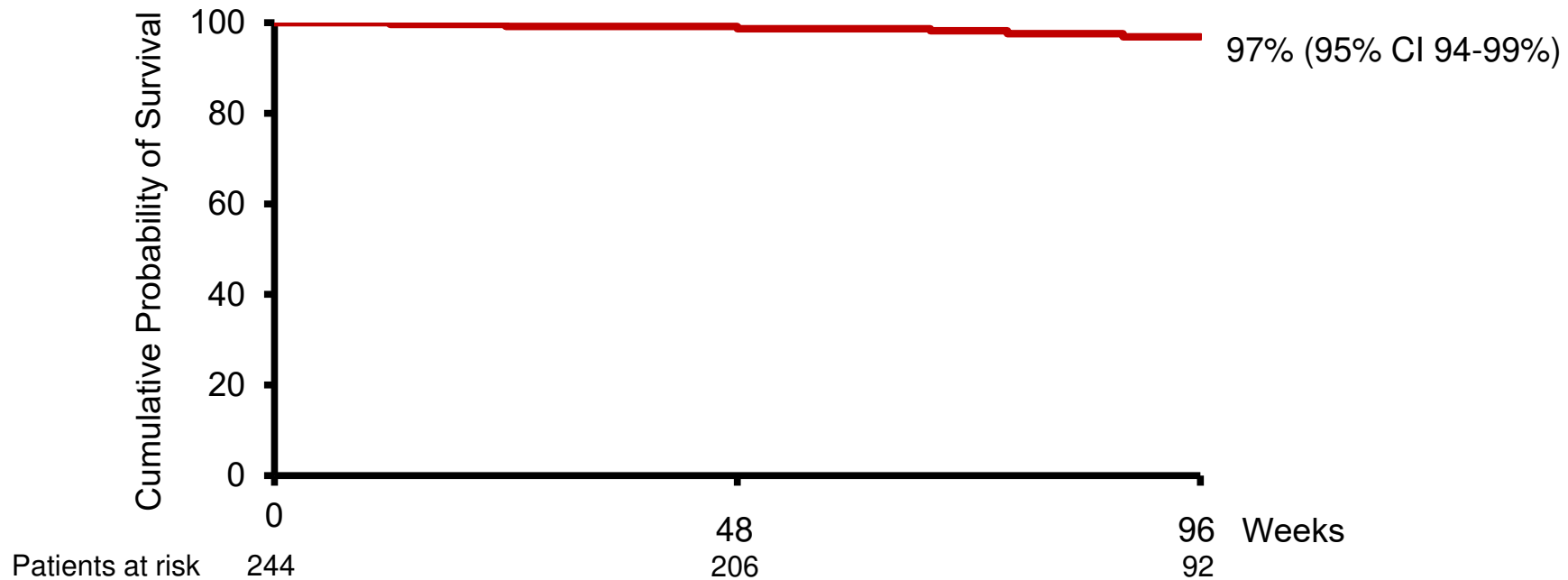
Patient	CPT Baseline	CSPH	Event	Features	Time to Event	VR at Event
#13	A5	Yes	HCC	BCLC A	6	PR
#57	A5	No	HCC	BCLC A	6	VR
#63	A5	Yes	HCC	BCLC A	11	NR
#134	A6	Yes	HCC	BCLC A	11	VR
#178	A6	Yes	HCC	BCLC C	18	VR
#200	A5	Yes	HCC	BCLC A	12	PR
#83	A6	Yes	Ascites	Acute Cholecystitis	10	NR
#177	A6	Yes	Ascites	No trigger events	6	VR
#190	A6	Yes	Ascites	No trigger events	18	VR
#204	A5	Yes*	Bleeding	No trigger events	18	VR
#226	A5	Yes <sup>o</sup>	Bleeding	No trigger events	6	NR

\*Esophageal varices on primary prophylaxis with non-selective beta-blockers; <sup>o</sup>Refused baseline upper endoscopy

# Survival, Lost to Follow-up & BLV Discontinuations



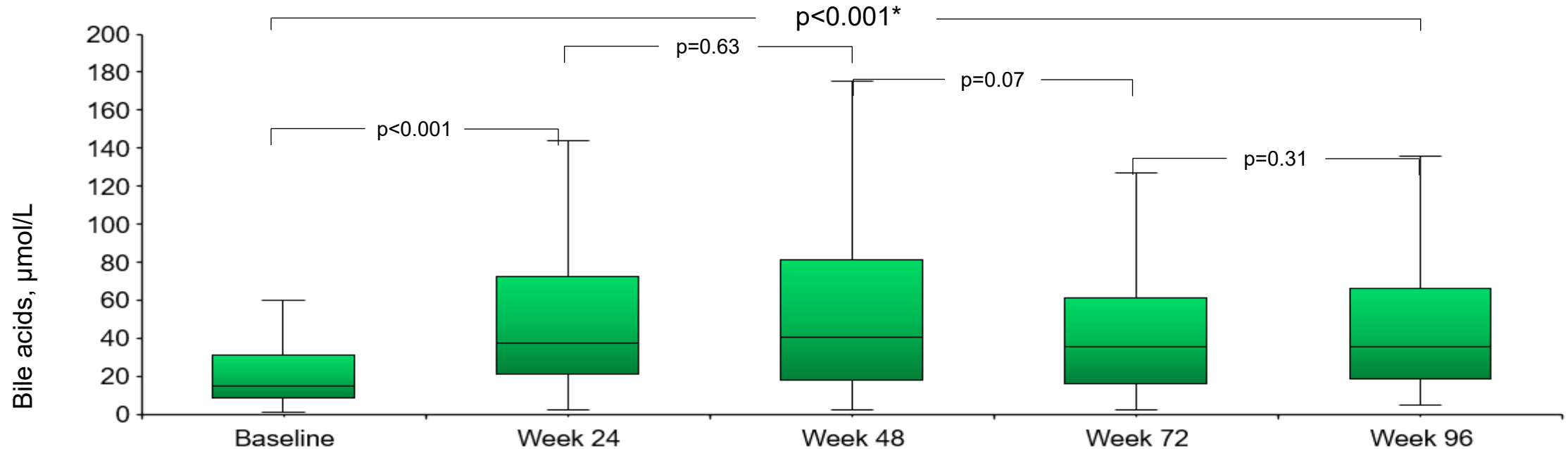
- 19 (8%) deaths/LT (median time 68 [39-73] weeks)
  - 13 LT (n=11 for HCC, n=2 for ESLD)
  - 6 deaths (pneumonia; intestinal infarction; non-hepatic neoplasm; HCC progression; ACLF)



- 12 (5%) BLV discontinuations\* (median time 48 [26-79] weeks)
- 7 (3%) PegIFN added to BLV
- 7 (3%) patients lost to follow-up (median time 30 [25-44] weeks)

\*Non-compliance n=2; virological non-response n=4, BLV-related adverse event n=1; liver decompensation n=2; long-term HDV RNA undetectability n=3  
LT: Liver Transplant; HCC: hepatocellular carcinoma; ESLD: end-stage liver disease; ACLF: Acute-on-chronic liver failure; BLV: Bulevirtide; PegIFN: PegInterferon

# Bile Acids Levels and Adverse Events During BLV



Median (IQR)	15 (9-32)	37 (21-73)	41 (18-82)	39 (17-66)	36 (19-66)
--------------	-----------	------------	------------	------------	------------

- Mild, transient pruritus in 10%, mostly within the first 24 weeks of treatment
- Injection site reactions in 3%
- N=1 grade 3 maculopapular rash with mild eosinophilia (BLV discontinued)

\* All timepoints vs. baseline

# SAVE-D: Submitted Abstracts & Full Text Manuscript

---



## EASL ILC – 2024:

- *Long-term virological and clinical outcomes of patients with HDV-related cirrhosis treated with Bulevirtide monotherapy for up to 120 weeks: a retrospective multicenter European study (SAVE-D) – **Poster#WED-391***
- *Bulevirtide Monotherapy Prevents Liver Decompensation and Reduces Mortality in Patients with HDV-related Cirrhosis: A Case-Control Study With Propensity Score Weighted Analysis – **Oral Communication #OS-120***

## AASLD TLM – 2024:

- *Bulevirtide monotherapy may reduce liver decompensation in patients with HDV-related compensated cirrhosis: a case control study with propensity score weighted analysis – **Poster Presentation***
- *Long-term Bulevirtide monotherapy in patients with HDV-related compensated cirrhosis: effectiveness, safety and clinical outcomes from the retrospective multicenter European study (SAVE-D) – **Oral Communication***

## FULL TEXT MANUSCRIPT:

- *Virological and clinical outcomes of patients with HDV cirrhosis treated with Bulevirtide monotherapy for up to 96 weeks: a multicenter European study (SAVE-D) – **J Hepatol Submitted 20<sup>th</sup> July 2024, Accepted 10<sup>th</sup> October***
-



# Bulevirtide Monotherapy Prevents Liver Decompensation (but not HCC) in Patients with HDV-related Cirrhosis: A Case-Control Study With Propensity Score Weighted Analysis

- Case-control study in patients with HDV-related compensated cirrhosis
- 140 BLV-Untreated patients from a single-center retrospective natural history study (*Romeo et al. Gastroenterology 2009*) vs. 176 BLV-Treated patients from the multicenter European SAVE-D study; follow-up censored 24 months
- Liver-related Events: Untreated n=21 (ascites n=10, bleeding n=2, HCC n=9); BLV-treated n=12 (ascites n=5, bleeding n=1)
- **2-year cumulative incidences of de-novo HCC: 6.6% vs. 3.7% (p=0.34); decompensation 9.1% vs. 3.6% (p=0.06)**
- **No liver decompensation among baseline CPT-A5 patients in the BLV-Treated cohort vs. 9.2% in the Untreated cohort (p=0.003)**

Outcomes	Category	Unadjusted Univariate Analysis		IPTW-Adjusted Cox Regression Analysis		IPTW-Adjusted Competing Risks Regression Model	
		HR (95% CI)	p value	HR (95% CI)	p value	SHR (95% CI)	p value
<b>OVERALL POPULATION</b>							
Liver-related Event	Treated vs. Untreated	0.52 (0.25-1.05)	0.07	0.38 (0.23-0.62)	<b>&lt;0.0001</b>	0.38 (0.23-0.61)	<b>&lt;0.0001</b>
Liver decompensation	Treated vs. Untreated	0.48 (0.18-1.28)	0.14	0.32 (0.16-0.63)	<b>0.001</b>	0.32 (0.17-0.61)	<b>0.001</b>
De-novo HCC	Treated vs. Untreated	0.57 (0.20-1.62)	0.29	0.50 (0.24-1.06)	0.07	0.50 (0.24-1.04)	0.06

A 24-month course of BLV monotherapy may prevent decompensation but not HCC in patients with compensated HDV-related cirrhosis

# Research Pipeline – SAVE-D Study

---



- Update Week 144: Effectiveness & Events
- On-treatment Predictors of response
- Suboptimal responders: outcomes
- Liver stiffness/Non-invasive Tests on-treatment & Clinical outcomes
- Clinical outcomes of BLV-treated patients vs. untreated historical cohorts

**FEEL FREE TO CONTRIBUTE! – OTHER SUGGESTIONS WELCOME**

---

# Acknowledgements: SAVE-D Participating Centers



**Division of Gastroenterology and Hepatology, Foundation IRCCS Ca' Granda Ospedale Maggiore Policlinico, Milan, Italy**  
P. Lampertico, E. Degasperi, R. D'Ambrosio, MP. Anolli, S. Monico, M. Borghi, R. Soffredini, R. Perbellini, D.Sambarino, F. Facchetti

Istituto Nazionale per le Malattie Infettive "L. Spallanzani" IRCCS, Rome Italy  
G. D'Offizi, F. Di Maria

Department of Clinical and Experimental Medicine, University of Pisa and Hepatology Unit, University Hospital of Pisa, Italy  
MR. Brunetto

Department of Medical and Surgical Sciences, Unit of Infectious Diseases, "Alma Mater Studiorum" University of Bologna, Italy  
G. Verucchi, Elena Rosselli del Turco

Department of Medical Sciences, University of Turin, Gastroenterology Division of Città della Salute e della Scienza of Turin  
A. Ciancio

Liver Unit, Fondazione IRCCS "Casa Sollievo della Sofferenza", San Giovanni Rotondo, Italy  
A. Mangia

Department of Medical and Surgical Sciences, Infectious Diseases Unit, University of Foggia, Foggia, Italy  
TA. Santantonio

Department of Mental Health and Public Medicine - Infectious Diseases Unit, University of Campania Luigi Vanvitelli, Naples, Italy  
N. Coppola

Liver Unit, San Camillo Hospital, Department of Transplantation and General Surgery, Rome, Italy  
A. Pellicelli

Gastroenterology, Hepatology and Transplantation Division, ASST Papa Giovanni XXIII, Bergamo, Italy  
A. Loglio, M. Viganò

Division of Hepatogastroenterology, Department of Precision Medicine, Università della Campania "Luigi Vanvitelli", Naples, Italy  
A. Federico

Division of Internal Medicine and Center for Hemochromatosis, University of Modena and Reggio Emilia, Modena, Italy  
F. Pileri

Institute of Infectious Diseases and Public Health, Università Politecnica delle Marche, Ancona, Italy  
M. Maracci

Division of Internal Medicine, Hepatobiliary and Immunoallergic Diseases, IRCCS Bologna, Italy  
M. Tonini

School of Medicine and Surgery University of Milano Bicocca  
M. Puoti

Division of Gastroenterology and Hepatology, Medical University of Vienna, Austria  
M. Jachs, T. Reiberger

Hepatology Department, Haut-Lévêque Hospital, Bordeaux, France  
V. De Ledinghen

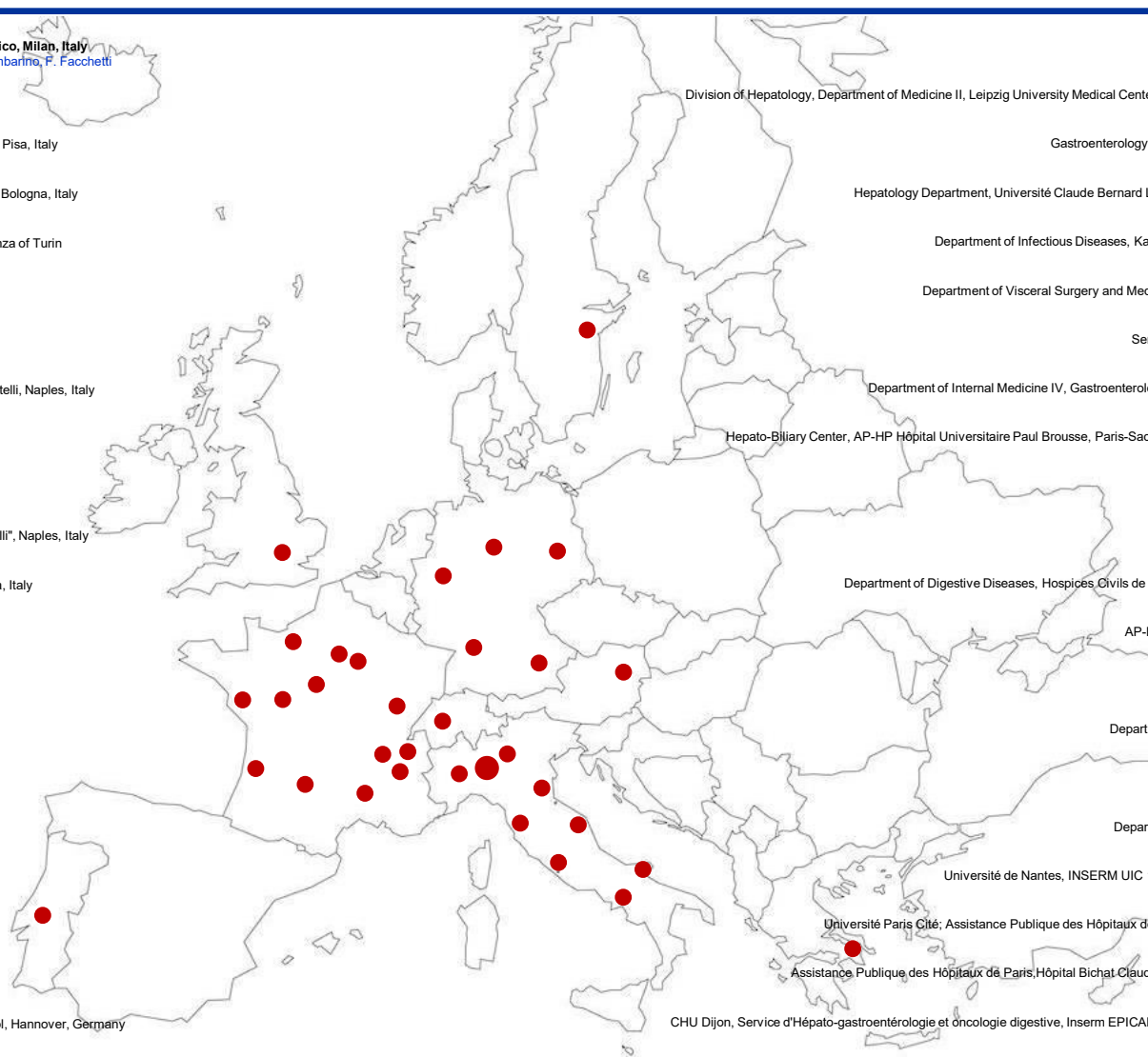
Hepatology Unit, CHU Rangueil, 31059, Toulouse, France  
S. Metivier

Department of Gastroenterology, Hepatology and Transplant Medicine, University of Duisburg-Essen, Germany  
C. Schramm, H. Schmidt

Department of Hepatology and Gastroenterology, Charité Universitätsmedizin Berlin, Berlin, Germany  
C. Zöllner, F. Tacke

Department of Gastroenterology, Hepatology Infectious Diseases and Endocrinology at Hannover Medical School, Hannover, Germany  
H. Wedemeyer, C. Dietz-Fricke, L. Sandmann

Department of Gastroenterology, General Hospital of Athens "Laiko" Medical School of National & Kapodistrian University of Athens, Greece  
M. Papatheodoridi, G. Papatheodoridis



Institute of Liver Studies, King's College Hospital, London, UK  
I. Carey, K. Agarwal

Division of Hepatology, Department of Medicine II, Leipzig University Medical Center, Laboratory for Clinical and Experimental Hepatology, Leipzig, Germany  
F. Van Bommel

Gastroenterology Department, Hospital Prof. Doutor Fernando Fonseca, Amadora, Portugal  
M. Cardoso

Hepatology Department, Université Claude Bernard Lyon 1 Hospices Civils de Lyon; INSERM Unit 1052 - CRCL; Lyon, France  
F. Zoulim, N. Subic-Levrero

Department of Infectious Diseases, Karolinska University Hospital, and Karolinska Institutet, Stockholm, Sweden  
S. Aleman

Department of Visceral Surgery and Medicine, Inselspital, Bern University Hospital, University of Bern, Switzerland  
N. Semmo

Service d'hépatogastro-entérologie, CHU Grenoble-Alpes, Grenoble, France  
MN. Hilleret

Department of Internal Medicine IV, Gastroenterology & Hepatology, Medical University of Heidelberg, Heidelberg, Germany  
U. Merle

Hepato-Biliary Center, AP-HP Hôpital Universitaire Paul Brousse, Paris-Saclay University Research INSERM-Paris Saclay Unit 1193, Villejuif, France  
B. Roche

Hôpital de la Source Orleans, France  
X. Causse

Service d'Hépatogastroentérologie CHU de Tours, France  
L. D'Alteroche

Department of Digestive Diseases, Hospices Civils de Lyon, Edouard Herriot hospital, Claude Bernard Lyon 1 University, France  
J. Dumortier

AP-HP, Avicenne Hospital, Hepatology Department, F-93000 Bobigny, France  
N. Ganne

Centre Hospitalier Anney Genevois, 74000 Anney, France  
F. Heluwaert

Department of Hepatogastroenterology, CHU de Caen Normandie, Caen, France  
I. Ollivier

Department of Gastroenterology, CH d'Avignon, Avignon, France  
JP. Arpurt

Department of Gastroenterology, Toulouse University Hospital, Toulouse, France  
K. Barange

Université de Nantes, INSERM UIC 1413, Department of Infectious Diseases CHU Hôtel Dieu, Nantes, France  
E. Billaud

Université Paris Cité; Assistance Publique des Hôpitaux de Paris, Hôpital Cochin Hepatology/Addictology department, Paris, France  
S. Pol

Assistance Publique des Hôpitaux de Paris, Hôpital Bichat-Claude Bernard, Service des Maladies Infectieuses et Tropicales, Paris, France  
A. Gervais

CHU Dijon, Service d'hépatogastroentérologie et oncologie digestive, Inserm EPICAD LNC-UMR1231 Université de Bourgogne-Franche Comté, Dijon, France  
A. Minello

Service d'hépatogastroentérologie, Centre Hospitalier Intercommunal, Créteil  
I. Rosa



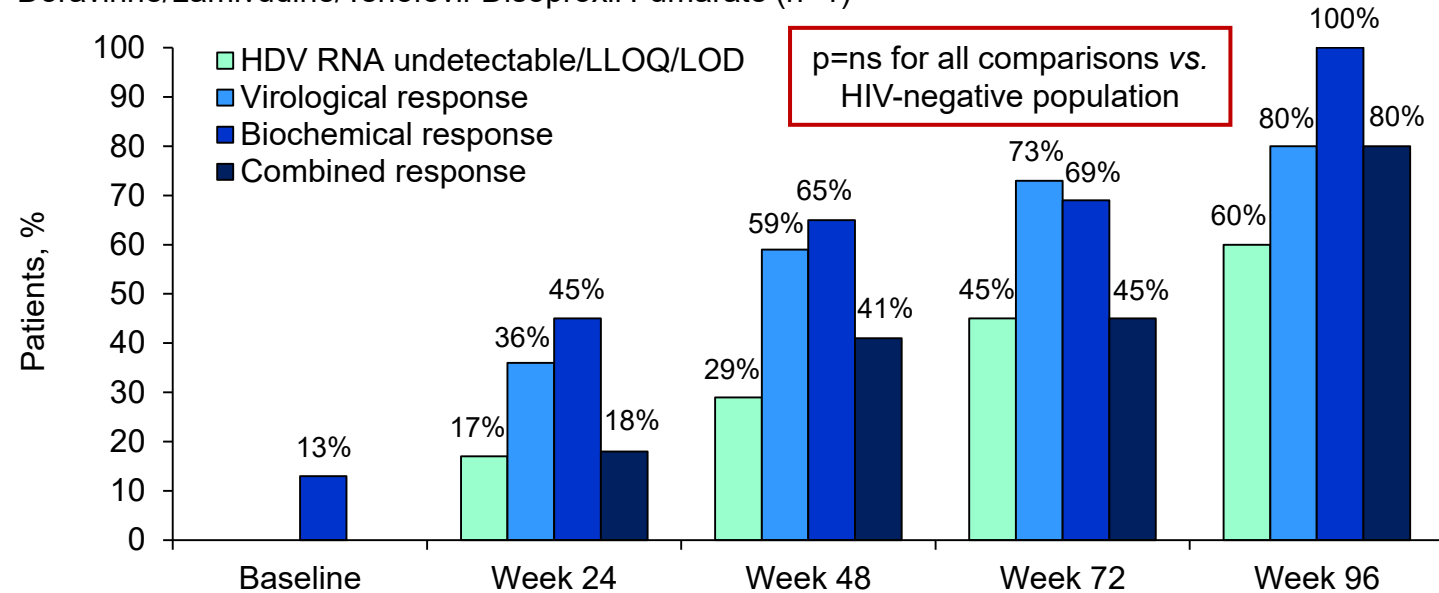
# Special Populations: HIV-Coinfected Patients



Baseline Variables	Overall (n=24)
<b>Age, years</b>	<b>56 (48-59)</b>
Males	17 (71%)
Caucasians	23 (96%)
BMI, Kg/m <sup>2</sup>	25 (24-29)
CPT score A	24 (100%)
Esophageal varices <sup>@</sup>	10 (42%)
History of HCC	3 (13%)
Previous IFN treatment	13 (54%)
NUC treatment for HBV	24 (100%)
LSM, kPa	20.9 (13.3-26.3)
AST, U/L	67 (48-124)
ALT, U/L	73 (51-141)
Albumin, g/dL	4.1 (3.8-4.4)
PLT, 10 <sup>3</sup> /mm <sup>3</sup>	100 (84-127)
qHBsAg, Log IU/ml	3.3 (2.4-3.9)
HBeAg negative	20 (83%)
HDV RNA, Log IU/ml	5.3 (3.8-5.9)
HIV RNA detectable	0%
CD4 T cells, mm <sup>3</sup>	338 (257-444)
CD4 T cells, %	27 (22-35)

## HIV treatments during BLV course:

- Bictegravir/Emtricitabine/Tenofovir Alafenamide (n=11)
- Raltegravir/Emtricitabine/Tenofovir Alafenamide (n=5)
- Emtricitabine/Ripivirine/Tenofovir Alafenamide (n=4)
- Darunavir/Raltegravir/Emtricitabine/Tenofovir Disoproxil Fumarate (n=1)
- Elvitegravir/Cobicistat/Emtricitabine/Tenofovir Alafenamide (n=1)
- Dolutegravir/Lamivudine (n=1)
- Doravirine/Lamivudine/Tenofovir Disoproxil Fumarate (n=1)



HIV RNA detectable	0%	0%	0%	0%	0%
CD4 count (%)	338 (27%)	457 (31%)	474 (30%)	189 (24%)	186 (24%)

Values are expressed as number (percentage), median (IQR); <sup>@</sup> Upper GI endoscopy available in 16

HDV: hepatitis D virus; HIV: human immunodeficiency virus; BMI: body mass index; CPT: Child Pugh score; IFN: Interferon; NUC: nucleos(t)ige analogue HCC: hepatocellular carcinoma; LSM: Liver stiffness measurement; AST: aspartate aminotransferase; ALT: alanine aminotransferase; PLT: platelets; qHBsAg: Quantitative Hepatitis B surface Antigen; HBeAg: Hepatitis B e Antigen; HBV: Hepatitis B virus; CD: Cluster of differentiation



# Thank You for Your Attention!

---



FONDAZIONE IRCCS CA' GRANDA  
OSPEDALE MAGGIORE POLICLINICO



UNIVERSITÀ  
DEGLI STUDI  
DI MILANO

---